

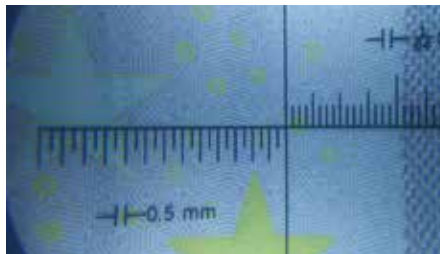


**Compact and durable 10x loupe with USB recharge LED/UV lights**



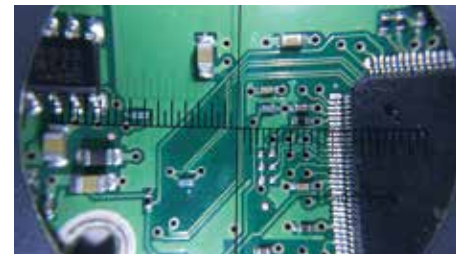
**Bright and clear view**

Strong 10x magnification with LED lights for the best inspection.



**Dedicated UV light**

Special 365nm UV for careful inspection, from money to industry.



**Scale tool**

Use the scale for precision work.



**Specs**

<b>Material</b>	Aluminium/K9
<b>Battery</b>	Lithium polymer 50mAh; About 1.5h LED/1.5hUV
<b>Recharge</b>	MicroUSB/DC5V<2A; About 1h
<b>Size</b>	45*43mm
<b>Lens size</b>	30mm
<b>Magnification</b>	About 10x
<b>Light</b>	White LED*2 UV*2
<b>Weight</b>	About 70g